



AUCTION

LEADING THE INDUSTRY SINCE 1945

Friday – February 23, 2018 – 11:00 AM

Marvin's Farm, Inc.

EQUIPMENT DISPERSAL AUCTION

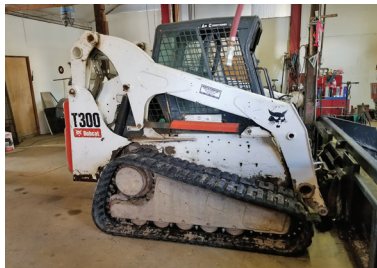
MFWD Tractors – JD Combine And Planter – Tillage – Trucks – Trailers
Grain Handling And Bins – Sprayer – Poly Tanks – Skid Loader – Excavator

After many successful years, the Marvins are downsizing operation.

ABSOLUTE AUCTION, all sells to the highest bidders on location:

10230 Norwalk Rd., Litchfield, OH 44253

Directions: Take SR 83 north of US RT 224, or south of RT 10 to SR 18 (Norwalk Rd.) and head west to auction.
Or take SR 18 east of Norwalk, OH to auction. Watch for KIKO signs.



Information is believed to be accurate but not guaranteed.



330.455.9357 • kikoauctions.com



TRACTORS: '03 Case IH MX210 MFWD, s#JAZ125334, C/H/A, with Westendorf XTA-700 loader w/ 96" bucket, auto steer ready, 18.4-46 duals, 4,950 hrs., red leather seat, buddy seat – '06 NH TG305 MFWD, s#Z6RW02709, C/H/A, 18/4 PS, 80R46 duals, 85R34 front duals, auto steer ready, 4 remotes, MegaFlow, 255 HP, 2100 hrs., buddy seat, one owner – '08 NH T8050 MFWD, s#Z7RW07067, C/H/A, 19/4 PS, 80R46 duals, 85R34 front duals, 3 remotes, 275 HP, 2,100 hrs., buddy seat, one owner – Each of the 3 tractors above has the Nav II controller installed and are plug and play with any of the following Trimble displays: Trimble AE500 GPS autopilot display WAAS/SBAS – Trimble FM1000 WAAS/SBAS – Trimble FM1000 w/ RTK unlock and DMC300 modem for Ohio CORRS system – '06 JD 6415 MFWD, s#505472, C/H/A, 16sp., 3,100 hrs., 85 HP, buddy seat

COMBINE – HEADS – HEADER CARTS – GRAIN CART – GRAVITY BOXES: '11 JD 9670 STS Combine, rear wheel assist, bullet rotor, Starfire 3000 GPS, 2630 monitor, auto-steer, long auger, hillside, 1582 engine/1087 sep. hrs., s#IH09670SCA0740374, buddy seat – selling separately '06 JD 635F flex grain platform, 35', s#HOO635F720631 – EZ Trail 880 header cart – '96 JD 893 corn head rebuilt w/ hyd. deck plates('08), w/ Chalmer kit ('12), s#HOO893X665652 – Killbros header cart, 30' – Killbros 1800 grain cart, approx. 900 bu. – Unverferth 400 gravity wagon w/ Killbros hyd. auger – J & M gravity wagon w/ Killbros hyd. auger

PLANTER – SPRAYER – TILLAGE EQUIP.: One-owner '12 JD 1790 planter, 16/31, s#A-01790CLCA745621, Pro Series row units, complete Precision Planting kit, hyd. variable seed drive, ind. auto row shutoffs, auto air down pressure, CCS seed delivery, row fertilizer, flex fold – '99 Rowcat 1,200-gal. SS liquid applicator, Cummins diesel, 90' booms, Trimble FM1000 added in 2012 w/ 9 section auto row shutoffs and auto steer, fence row nozzles, 4,200 hrs., floater and row crop (90%) tires – one-owner '13 Great Plains 30' Turbo Max vertical till, 30', roller baskets – 27' Blue Jet AA or 28% toolbar with Coldflow and Ravens controller – Eversman 16' land leveler – VFD Ditcher, 3pt, PTO – Landpride 10' hyd. rear blade – 22' Phillips smart till – Case IH 2500 7 shank pull type subtiller, – small 2-yard land pan

SKID LOADER – EXCAVATOR – FORKLIFT: Bobcat T300 skid loader, rubber track, C/H/A, remotes, 4,900 hrs., material bucket – CAT 307 excavator, new undercarriage drive chains, blade, 4,670 hrs., 12", 24", 40" ditching bucket – good Hyster 70 forklift, 4,800 lb. cap, LP, 60" forks, side shift and power fork shuttle, 9,000 hrs.

TRUCKS – TRAILERS: '89 Freightliner truck, day cab, 300 HP CAT, 773K miles, good – '84 Kenworth truck, 855 Cummins big block, newer brakes, good tires – Nice '98 Timpte aluminum grain trailer, 33' w/ roll tarp, one owner – Hawkeye '28 steel grain trailer w/ roll tarp, very good – '99 Ford F450 Super Duty dump truck, gas, 4x4, 9' hyd. bed, automatic, A/C, w/ 9' snowplow and HYD hookups for seed auger, 48k miles – '95 Cleveland deck over trailer, 18' + 4, triaxle, new tires – 9' Aluminum bed work trailer w/ 300-gal. fuel tank and 2 yr. old 12V pump.

GRAIN BINS – BIN DRYER AND HANDLING EQUIP. – POLY TANKS: (2) Brock 36 x 7 bins, 20-22K bu., 10" unload augers w/ power sweep – Brock 30 x 5 bin w/ stir augers and DMC continuous flow dryer 30HP 3 ph. Fan and DMC turnkey auto control, 9k bu. – Brock 30 x 5 bin w/ power sweep, 8" unload auger w/ power sweep, 10-12k bu. – DMC Trans-Fer 700 4" airlock – DMC 15 HP 3 ph. 4" Roots Blower – approx. 250' 4" grain transfer pipe, several sweep 90s, cam locks and mounting brackets – Drive over in-ground grain pit w/ 300 bu. stainless hopper and 12" auger – (2) Movable elec. control rooms, (1) is 8' x 8' x 8'H w/ 400-amp single Ph SQ D breaker panel and 200-amp SQ D breaker panel and (1) is 4' x 8' x 9'H w/ (2) 200-amp breaker panels and several magnetic contactors and disconnects – Westfield MK130-61 grain transport auger, 13", 61' w/ swing hopper, one owner – 10" x 57' transport auger w/ 30 HP 3 ph. motor – approx. 45' x 12" cross auger – approx. 60' x 10" cross auger – (2) Arco HD30 phase converters each 30 HP single 100 HP total – 18" x 40' SS belt conveyor, 10 HP, 3 ph. – 24" x 30' SS belt conveyor, 5 HP, 3 ph. – 1,000-gal. poly tank on running gear – 1,500, 2,500, 4,600, 6,500-gal. poly tanks, 7500 and 15,000-gal. fiberglass tanks – Hunter 30,000-gal. liquid storage dike, fiberglass sides with Hypalon liner (Note: All bins are in good condition and were used this year. Buyer will have until July 1, 2018, to remove bins and dike)

MOWERS – MISC EQUIP. – ANVIL – STEEL – SHOP INV.: Woods 3180 batwing mower, 15' – root rake attachment for skid loader – 2,000-gal. double wall fuel tank w/ elec. pump – 1,000-gal. fuel tank w/ elec. pump on running gear, Westendorf 12' snow pusher attachment – 18' trailer w/4 ProBox unit Seed Jet II Pneumatic seed handler – small elec. seed cleaner – electric fuel station pump – metal band saw – HD hyd. shop press – few shop tools – small quantity of angle, channel, box tubing – some SS sheeting and SS conveyor parts – hyd. hose crimping dies, approx. 100 1/4, 3/8, and 1/2 crimp fittings and small quantity of bulk hose – hundreds of mostly new, mostly poly 1, 2 and 3 inch valves, camlocks, threaded and hose barb fittings – large anvil – skid steer mounted hyd. mower – etc.

ALSO SELLING FOR NEIGHBORS: NH 354 grinder mixer – McCurdy gravity wagon w/ 10-ton gear – JD 4960 MFWD tractor, C/H/A, s#RW4960P004295, 3 remotes, quick hitch, 20.8R42 rears, 6,840 hrs. – JD 5303 diesel tractor, s#PY5303U003417, ROPS, dual remotes, 970 hrs., 540 PTO – JD 750 drill, 7.5" spacing, 15' w/markers, new openers and new cast closing wheels 2017 – Westfield MK130-71 transport auger, 13", 71', gear driven hopper

AUCTIONEER'S NOTE: Very good and well maintained, late model equipment. Preview on Thursday, Feb. 22nd from 9:00 AM until noon. Out-of-state bidders need bank letter of guaranteed funds. Lunch available.

TERMS ON CHATTELS: Driver's license or State ID required to register for bidder number. Cash, Check, Debit Card, Visa, or Master Card accepted. 4% buyer's premium on all sales; 4% waived for cash or check. Information is believed to be accurate but not guaranteed.



Auctioneer/Realtor®
MATTHEW P. KIKO AARE
 330-327-9617
 mattkiko@kikocompany.com



330.455.9357 • kikoauctions.com

